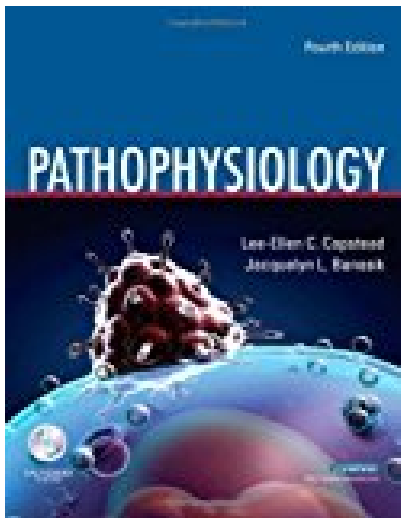


# Pathophysiology 4e 4th fourth Edition by Copstead-Kirkhorn PhD RN Lee- Ellen C. Banasik PhD ARNP published by Saunders 2009

---



## BOOK DETAILS

- Author :
- Pages : Pages
- Publisher : Saunders
- Language :
- ISBN :



## BOOK SYNOPSIS

**PATHOPHYSIOLOGY 4E 4TH FOURTH EDITION BY COPSTEAD-KIRKHORN PHD RN LEE-ELLEN C. BANASIK PHD ARNP PUBLISHED BY SAUNDERS 2009** - Are you looking for Ebook Pathophysiology 4e 4th Fourth Edition By Copstead-Kirkhorn PhD RN Lee-Ellen C. Banasik PhD ARNP Published By Saunders 2009 ? You will be glad to know that right now Pathophysiology 4e 4th Fourth Edition By Copstead-Kirkhorn PhD RN Lee-Ellen C. Banasik PhD ARNP Published By Saunders 2009 is available on our online library. With our online resources, you can find Applied Numerical Methods With Matlab Solution Manual 3rd Edition or just about any type of ebooks, for any type of product.

Best of all, they are entirely free to find, use and download, so there is no cost or stress at all. Pathophysiology 4e 4th Fourth Edition By Copstead-Kirkhorn PhD RN Lee-Ellen C. Banasik PhD ARNP Published By Saunders 2009 may not make exciting reading, but Applied Numerical Methods With Matlab Solution Manual 3rd Edition is packed with valuable instructions, information and warnings. We also have many ebooks and user guide is also related with Pathophysiology 4e 4th Fourth Edition By Copstead-Kirkhorn PhD RN Lee-Ellen C. Banasik PhD ARNP Published By Saunders 2009 and many other ebooks.

We have made it easy for you to find a PDF Ebooks without any digging. And by having access to our ebooks online or by storing it on your computer, you have convenient answers with Pathophysiology 4e 4th Fourth Edition By Copstead-Kirkhorn PhD RN Lee-Ellen C. Banasik PhD ARNP Published By Saunders 2009 . To get started finding Pathophysiology 4e 4th Fourth Edition By Copstead-Kirkhorn PhD RN Lee-Ellen C. Banasik PhD ARNP Published By Saunders 2009 , you are right to find our website which has a comprehensive collection of manuals listed.